

# CABLE RELEASE NEWSLETTER

## PHOTOGRAPHY CLUB OF GREATER CINCINNATI

**July 2009**

<http://www.cincyphotoclub.com>

**We Welcome Guest: Beginner, Intermediate or Advanced    Digital – Slides – Prints**

*Club meetings are held the 1<sup>st</sup> and 3<sup>rd</sup> Monday of each month at 7:30 pm. Photo Study is on the last Monday of each month at 7:30 pm. Location is at Friendship United Methodist Church | 1025 Springfield Pike | Cincinnati, Ohio 45215.  
For more information: (513)-631-0734 or (859)-441-7854*

**Note:** We have a new Club e-mail address: [PCGC1951@yahoo.com](mailto:PCGC1951@yahoo.com)

### 2009 Competition Subjects

Month	Pictorial	Nature	Prints
Aug	Back Yard Birds/Animals <b>Digital</b>	Reflection	Pictorial 1st MDY
Sep	Open	Open	Nature 3rd MDY
Oct	Small Town Views	Rocks	
Nov	Open <b>Digital</b>	Open	Pictorial 1st MDY
Dec	Humor	Fog Mist/Storm	Nature 3rd MDY

### News:

Thanks to Steve Lohmueller and his wife for a special treat she made for our refreshment break at the July pictorial meeting. I don't know if Steve's wife is any good at photography, but she sure is a Pro at cake making and decorating. It was a shame to cut and eat this cake. Below are photos of her art work, before the club devoured it.



Thanks from all the club members.  
**Tasty!**

One other note from this month is at the nature competition we had to do club judging. We had 3 volunteers to judge and they used a 1-10 point system to score. That is why we had a tie for 6<sup>th</sup> place.

# Competition Results for July 2009

## Pictorial

*Subject: Open*

*Judge: Randy Bick*

**1-Denali Nat'l Park - Steve Lohmueller**

**2-On the Rocks - Barb Farber**

**3-Weather Beaten - Carl Shadix**

**4-Lonesome Roads - Julie Kellam**

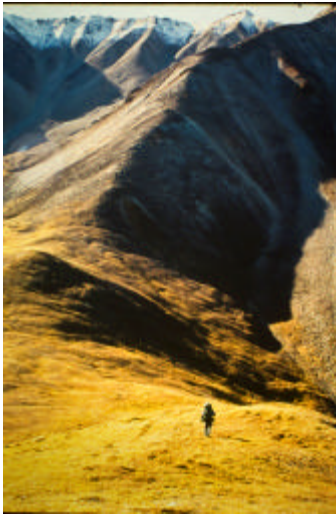
**5-Step Up - Lois Borisch**

**6-Beach Wall - Sharon Evans**

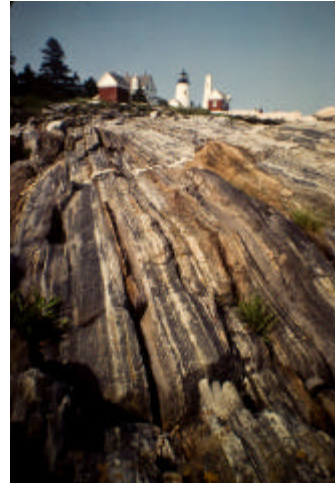
HM-Tulip - Maurice Jennings

HM-Evening on the Pond-Janet Robinson

HM-The City - Jane Gahl



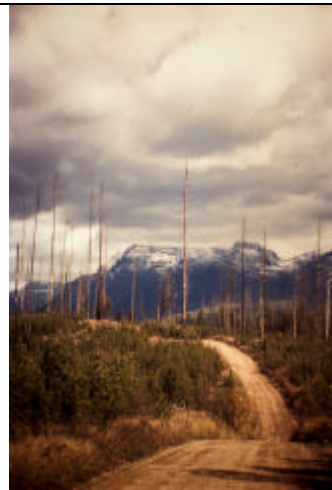
1



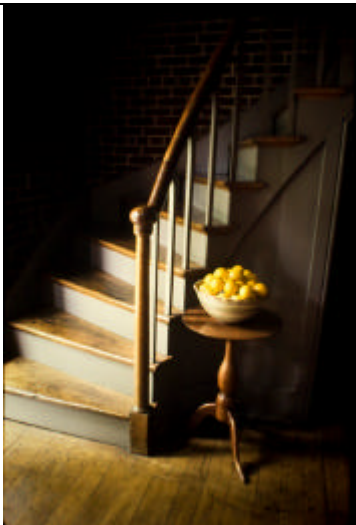
2



3



4



5



6

**Nature**    *Subject: Open*    *Judge: Club*

- 1 - Mobius Arch - Fr. Dale Peterka**
- 2 - Shoveler - Mark Kraus**
- 3 - Silverback - Mike Rank**

- 4 - Tree on Shore - Don Meiners**
- 5 - Mystic Woods - Jane Gahl**
- 6 - (tie) Splash - Barb Farber,**  
**3 Hearts - Miriam Jennings**



1



2



3



4



5



6

